

**DT-X450**

Data capture safely  
under control



**11**

Android™

**25**

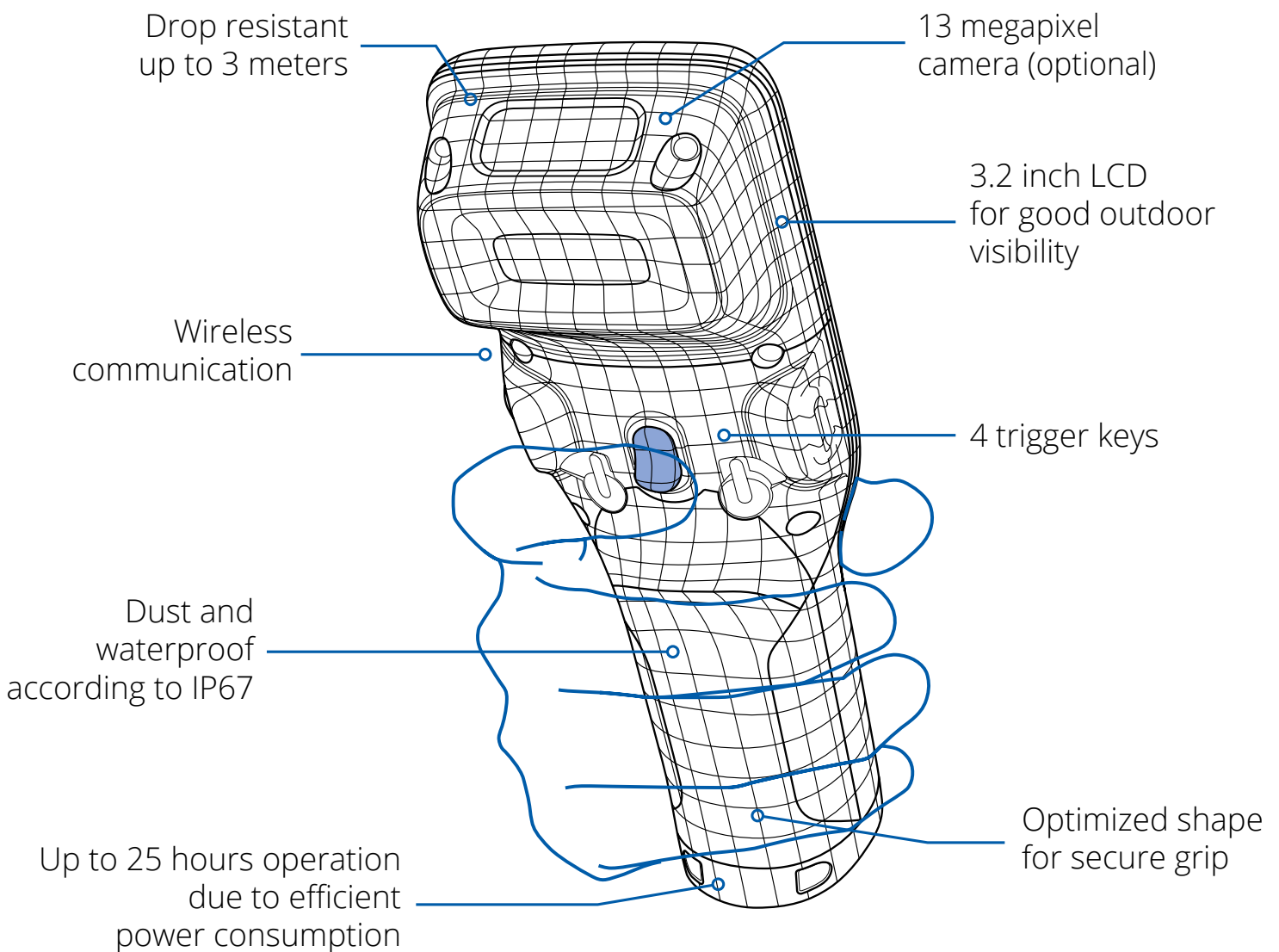
Operating time

Extra grip  
ergonomics

# Ergonomic? Logically!

---

The development of the new DT-X450 series clearly focused on one keyword: ease. Many intelligent details make for considerably easier handling. In addition, the Android platform makes it easier to find suitable applications or to specifically develop them.



# Accessories



**HA-S62IO**

LAN/USB communication and charging cradle with additional battery charging option

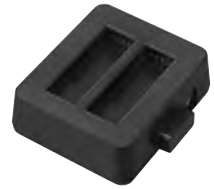


**HA-S60IO**

USB communication and charging cradle with additional battery charging option



**HA-S36DCHG** Charger for 2 DT-X400/X450, 3-times cascadable



**HA-S32DCHG** Charger for 2 batteries, 3-times cascadable



**HA-S20BAT**

Lithium-ion battery (2.900 mAh)



**HA-S95HB**

Hand Belt

**AD-S50400A:** Power supply unit for HA-S60IO / HA-S62IO

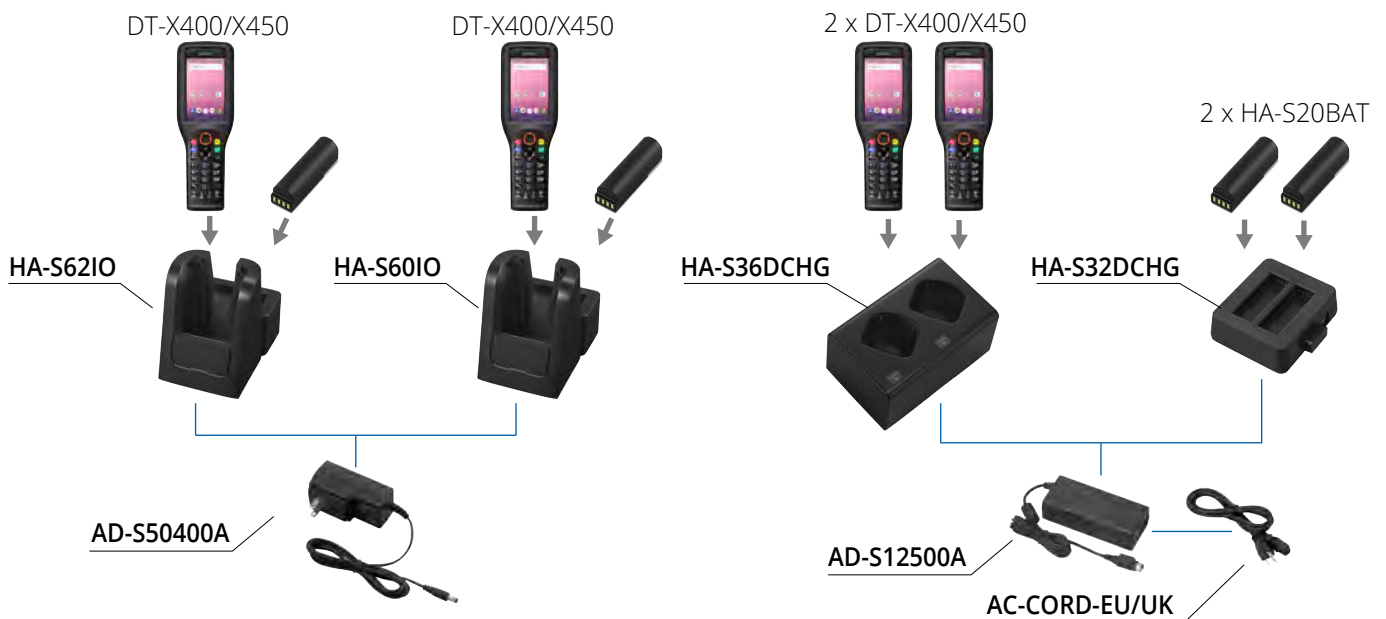
**AD-S12500A:** Power supply unit for HA-S36DCHG / HA-S32DCHG

**AC-CORD-EU/UK:** AC cable for AD-S12500A

**DT-380USB-A:** USB cable HA-S62IO / 60IO (Type B) and PC (Type A)

**HA-S81USBC:** USB cable DT-X450 (Type C) and PC (Type A)

## Cradle configuration





### Always with you

- Bright 3.2 inch LCD display
- 13 megapixel camera (optional)
- IP67 dustproof and waterproof
- 3 meter drop resistant

### Ready for any application

- Android 11 OS
- Many 3rd party apps on the market
- Standard for in-house developments

### Lasts all day long

- Up to 25 hours of continuous operating time
- Optimized power consumption
- 2,900 mAh battery with large capacity

### Lies securely in the hand

- Ergonomically optimized grip
- Optimum weight distribution
- Handle with non-slip surface
- 4 trigger keys

### Excellent connectivity

- WLAN / Bluetooth 5.1
- LTE Communication
- GPS positioning
- NFC (Type A/B/FeliCa®)

### Intuitive operation

- Resistive touch panel
- Input by pen, finger and glove
- Freely assignable function keys

# CASIO DT-X450

Model	Scanner	Camera	NFC	W-WAN
DT-X450-20	C-MOS Imager	-	-	-
DT-X450-C21	C-MOS Imager	✓	✓	-
DT-X450-WC21	C-MOS Imager	✓	✓	✓

Specifications	DT-X450-20	DT-X450-C21	DT-X450-WC21	
CPU	Qualcomm 2.0 GHz octa-core			
OS	Android™ 11			
Memory	RAM	4 GB		
	FROM	64 GB		
Display	LCD	3.2-inch transmissive color TFT LCD (800 x 480 pixels)		
	Touch Panel	Resistive touch panel		
Input Devices	Keyboard	10 Key (alphanumeric), CLR, Enter, Cursor, Power, Fn, Function (F1 - F8)		
	Trigger	Center, L, R, Rear		
	Scanner	C-MOS Imager		
	Camera	-	13 Megapixel, auto focus, LED flash	
	NFC	-	ISO14443 Type A / ISO14443 Type B / Felica® / ISO15693	
	GPS	-	-	Built-in A-GPS, GLONASS, BeiDou, QZSS/L1C
Wireless Communication	Bluetooth®	Ver.5.1 EDR/LE		
	WLAN	IEEE 802.11a/b/g/n/ac, IEEE 802.11d, WPA2/WPA3(Personal, Enterprise) support		
	WWAN (model dependent)	-	-	LTE UMTS/HSPA/HSPA+, GSM/GPRS/EDGE
Durability	Drop Durability	3.0 m		
	Dust and Water Resistance	IP67		
Sensor	Accelerometer, Illumination sensor, Proximity sensor, Gyroscope sensor, Geomagnetic Sensor			
Extensions	USB	USB 2.0 (Type-C) x 1		
	SD card slot	microSD x 1, SDXC compatible		
	SIM card slot	-	-	nano SIM x 1
Power	Main Power	Lithium-ion battery, Operating period: Approx. 25 hours with 2,900 mAh		
	Memory Backup	Integrated Lithium-ion battery		
External Dimensions (W x D x H)	Approx. 66 (grip: 45) x 196 x 38 (grip: 33) mm			
Weight	Approx. 260 g (including battery)			

## Model-specific features:

### 13 megapixel camera

- Documentation of damaged goods
- Shelf allocation

### LTE Communication

- Real-time communication
- GPS positioning

### NFC

- Type A/B/FeliCa®
- Login security through NFC card

Google, Android, Google Maps, Google Drive and other marks are trademarks of Google LLC. MIFARE is a registered trademark of the NXP B.V. FeliCa is a registered trademark of the Sony Corporation. The Bluetooth® trademark is owned by Bluetooth SIG, Inc., USA, and licensed to CASIO Computer Co., Ltd. Other product- and company names are either trademarks or registered trademarks of the respective owners. The design and specifications may vary without notice. The color display of pictures may vary from the actual colours. Screen images are simulated representations. The specifications in the table above were provided in April 2022.

CASIO grants a warranty period of 12 months on all CASIO System products (cash registers and handy terminals).



**Nordelettronica S.R.L.**  
Via Cantù, 36 - 20092 - Cinisello Balsamo (MI) - Italia  
+39 02 6111961 - www.nordele.it - info@nordele.it



**CASIO**

Mobile Industrial Solution

# CASIO DT-X400

Model	Scanner	Camera	NFC	W-WAN
DT-X400-10	Semiconductor laser	-	-	-
DT-X400-20	C-MOS Imager	-	-	-
DT-X400-C21	C-MOS Imager	✓	✓	-
DT-X400-WC21	C-MOS Imager	✓	✓	✓

Specifications	DT-X400-10	DT-X400-20	DT-X400-C21	DT-X400-WC21
CPU	Qualcomm 1.3 GHz octa-core			
OS	Android™ 8.1			
Memory	RAM		2 GB	
	FROM		16 GB	
Display	LCD			
	3.2-inch transmissive color TFT LCD (800 x 480 pixels)			
	Touch Panel			
	Resistive touch panel			
	Keyboard			
	10 Key (alphanumeric), CLR, Enter, Cursor, Power, Fn, Function (F1 - F8)			
	Trigger			
	Center, L, R, Rear			
Input Devices	Scanner	Laser Scanner	C-MOS Imager	
	Camera	-	-	8 Megapixel, auto focus, LED flash
	NFC	-	-	ISO14443 Type A / ISO14443 Type B / Felica® / ISO15693
	GPS	-	-	Built-in A-GPS, GLONASS, BeiDou, QZSS/L1C
	Bluetooth®	Ver.5.0 EDR/LE		
Wireless Communication	WLAN			
	IEEE 802.11a/b/g/n, IEEE 802.11d, WPA2 support			
	WWAN (model dependent)			LTE UMTS/HSPA/HSPA+, GSM/GPRS/EDGE
Durability	Drop Durability		3.0 m	
	Dust and Water Resistance		IP67	
Sensor	G-sensor, ambient light sensor, proximity sensor			
Extensions	USB			
	USB 2.0 (Type-C) x 1			
	SD card slot			
	microSD x 1, SDHC compatible			
	SIM card slot			nano SIM x 1
Power	Main Power			
	Lithium-ion battery, Operating period: Approx. 30 hours with 2,900 mAh			
	Memory Backup			
	Integrated Lithium-ion battery			
External Dimensions (W x D x H)	Approx. 66 (grip: 45) x 196 x 38 (grip: 33) mm			
Weight	Approx. 260 g (including battery)			

## Model-specific features:

### 8 megapixel camera

- Documentation of damaged goods
- Shelf allocation

### LTE Communication

- Real-time communication
- GPS positioning

### NFC

- Type A/B/FeliCa®
- Login security through NFC card

Google, Android, Google Maps, Google Drive and other marks are trademarks of Google LLC. MIFARE is a registered trademark of the NXP B.V. FeliCa is a registered trademark of the Sony Corporation. The Bluetooth® trademark is owned by Bluetooth SIG, Inc., USA, and licensed to CASIO Computer Co., Ltd. Other product- and company names are either trademarks or registered trademarks of the respective owners. The design and specifications may vary without notice. The color display of pictures may vary from the actual colours. Screen images are simulated representations. The specifications in the table above were provided in April 2022.

CASIO grants a warranty period of 12 months on all CASIO System products (cash registers and handy terminals).



**Nordelettronica S.R.L.**

Via Cantù, 36 - 20092 - Cinisello Balsamo (MI) - Italia  
+39 02 6111961 - www.nordele.it - info@nordele.it



**CASIO®**

Mobile Industrial Solution