

IT-G600
IT-G650

Data capture
at its best



Two models, one leader board

Touchscreen or keys? With different models for different user needs, you have the choice!

The flagship IT-G600 with 10 keys and IT-G650 with 5.5" full screen models are available. The two models have a lot in common, though: both models are perfectly designed for a wide range of application areas, such as retail, transport or logistics. The Casio IT-G600 and IT-G650 are verified Android Enterprise Recommended devices. Android Enterprise Recommended offers an ecosystem of devices and services verified by Google™ for the enterprise grade requirements of performance, consistency and security updates.



CASIO IT-G600

The classic 10-digit keyboard with ergonomic optimisation makes it easier to use while wearing gloves and to type without looking.

Can handle any use

It can easily take drops from up to 1.8 m onto concrete. And thanks to the IP67 compliant, dust and water have no chance of getting through.

Adaptable

Android™ makes using in-house apps a breeze. The interface on the back connects extension modules to the device.

25°
CasioScan

11^{*1}
Android™

IP67
Protection Rating

300_g^{*2}
Weight approx.

4.7"
Large Display

1.8_m
Drop Resistance

*1: Upgrade available from Android 9 *2: Resp. 310 g

CASIO IT-G650

All information can be seen at a glance on the generous 5.5-inch full screen.

Fits well in your palm

The narrow, round grip area, the trigger keys on the side and a light weight of approx. 300 g make pleasant work of the job.

Fully equipped

The 2D imager, NFC, Wi-Fi, LTE, Bluetooth® and 13 megapixel camera cover every situation.



25°
CasioScan

11^{*1}
Android™

IP67
Protection Rating

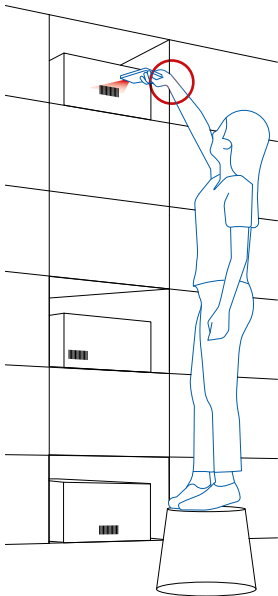
300_g^{*2}
Weight approx.

5.5"
Large Display

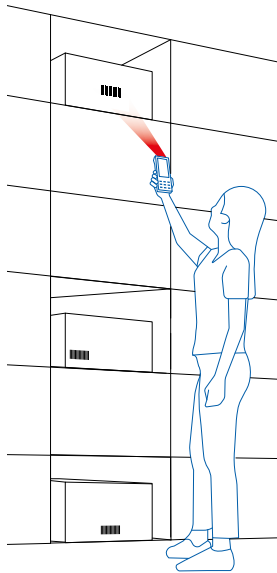
1.5_m
Drop Resistance

*1: Upgrade available from Android 9 *2: Resp. 310 g

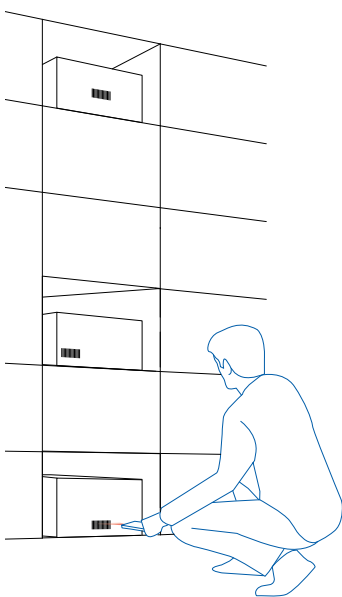
Barcode scanning without limits – thanks to CasioScan25°



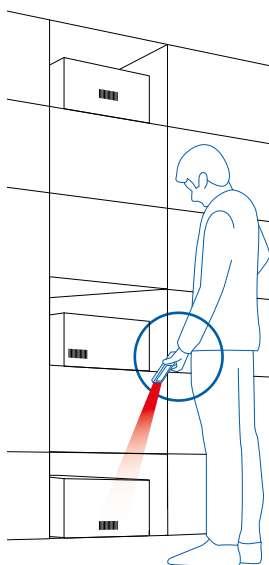
Conventional barcode scanner



CasioScan25°



Conventional barcode scanner



CasioScan25°

Reading barcodes is one of the most important tasks a professional mobile computer undertakes, especially in retail. The scanner hardware is normally positioned on the front of the device – meaning that barcodes can only be scanned at one specific angle.

Thanks to our especially ergonomic design we have redefined barcode scanner hardware: the 25° tilt of the scanner unit means that barcodes at foot and waist level and even overhead can be read, all while holding the device in a natural way.

This design allows for fatigue-free work – and helps to minimise health-related downtime in the long term.

Accessories



HA-U62IO

LAN/USB communication and charging cradle with additional battery charging



HA-U60IO

USB communication and charging cradle with additional battery charging



HA-U36DCHG

Charger for 2 IT-G600/G650, 3-times cascadable



HA-U32DCHG

Charger for 2 batteries, 3-times cascadable



HA-U20BAT

Lithium-ion battery (3,000 mAh)

Additional Accessories

- **AD-S50400A** – Power supply unit for HA-U60IO/HA-U62IO
- **AD-S12500A** – Power supply unit for HA-U36DCHG/HA-U32DCHG
- **AC-CORD-EU/UK** – AC cable for AD-S12500A
- **DT-380USB-A** – USB cable HA-U62IO/U60IO (Type B) and PC (Type A)
- **HA-S81USBC** – USB cable IT-G600/G650 (Type C) and PC (Type A)

Cradle configuration



Model		IT-G600-C21-11	IT-G600-WC21-11	IT-G650-C21-11	IT-G650-WC21-11
CPU		Qualcomm SDA/SDM660 (Octa Core 2,2 GHz)			
OS		Android 11, Android Enterprise Recommended			
Memory	RAM	4 GB			
	FROM	64 GB			
Display	Screen Size	4.7 inch, HD (1280 x 720)		5.5 inch, HD+ (1440 x 720)	
	Touch panel	Capacitive Multi-Touch (Dragontrail Pro®)			
Scanner		CMOS Imager unit angle by 25° with Laser Aimer			
Camera		13 megapixel, Auto focus, LED Flash			
Input	Key	Power, Volume up / down			
		10 keys (alpha numeric), Function (F1 to F4), Trigger (Center/R/L)		Function (F1 to F4), Trigger (R/L)	
	Reset Switch	Hardware Reset			
Sensors		Acceleration, Light Ambient, Proximity, Gyroscope, Geomagnetic (compass) sensor			
Bluetooth®		Ver. 5.0 EDR/LE			
WLAN		IEEE802.11 a/b/g/n/ac, IEEE802.11d, WPA2/WPA3(Personal, Enterprise) support			
Wireless Communication	WWAN	-	Yes	-	Yes
	GPS	LTE, WCDMA Band 1/6/8 (3G Voice communication complied), GSM 900 / GSM 1800			
	GPS	GPS, GLONASS, Michibiki (QZSS/L1C)			
RFID/NFC		ISO14443Type A/B/FeliCa (R), ISO15693, Output Power over 3.5 A/m			
USB		USB 2.0 (Host/Client), USB Type-C (Power supply over 2,000 mA)			
Charging station port		USB 2.0			
SD card slot		microSD (SDXC)			
SIM card slot		-	nano SIM	-	nano SIM
Extention port (for Local Development)		(RFID/NFC, Legic Reader solutions)			
Battery	Main Power	Lithium-ion battery, Approx. 20 hours (JEITA G-mode)			
	Capacity	Changeable Lithium-ion battery with 3,000 mAh			
	Backup Time	RAM Backup: over 4 minutes RTC Backup: over 72 hours			
External Dimensions (W x D x H)		approx. 75 x 180 x 18 mm		approx. 78 x 180 x 18 mm	
Weight		approx. 300 g (including battery)		approx. 310 g (including battery)	
Durability	Dust / Water proof	IP67			
	Drop Durability	1.8 m onto concrete		1.5 m onto concrete	
	Temperature	Operation -20 to 50 °C / Non-operation -20 to 60 °C			
	Humidity	Operation 30 to 80 % RH / Non-operation 5 to 90 % RH			

Google, Android, Google Maps, Google Drive and other marks are trademarks of Google LLC. MIFARE is a registered trademark of the NXP B.V. FeliCa is a registered trademark of the Sony Corporation. The Bluetooth® trademark is owned by Bluetooth SIG, Inc., USA, and licensed to CASIO Computer Co., Ltd. Other product- and company names are either trademarks or registered trademarks of the respective owners. The design and specifications may vary without notice. The color display of pictures may vary from the actual colours. Screen images are simulated representations. The specifications in the table above were provided in April 2022.

CASIO grants a warranty period of 12 months on all CASIO System products (cash registers and handy terminals).



Nordelettronica S.R.L.

Via Cantù, 36 - 20092 - Cinisello Balsamo (MI) - Italia
+39 02 6111961 - www.nordele.it - info@nordele.it



CASIO®

Mobile Industrial Solution

Model		IT-G600-C21	IT-G600-WC21	IT-G650-C21	IT-G650-WC21
CPU		Qualcomm SDA/SDM660 (Octa Core 2,2 GHz)			
OS		Android 9, Android Enterprise Recommended Upgrading Android 11 is available			
Memory	RAM	4 GB			
	FROM	64 GB			
Display	Screen Size	4.7 inch, HD (1280 x 720)		5.5 inch, HD+ (1440 x 720)	
	Touch panel	Capacitive Multi-Touch (Dragontrail Pro®)			
Scanner		CMOS Imager unit angle by 25° with Laser Aimer			
Camera		13 megapixel, Auto focus, LED Flash			
Input	Key	Power, Volume up / down			
		10 keys (alpha numeric), Function (F1 to F4), Trigger (Center/R/L)		Function (F1 to F4), Trigger (R/L)	
	Reset Switch	Hardware Reset			
Sensors		Acceleration, Light Ambient, Proximity, Gyroscope, Geomagnetic (compass) sensor			
Bluetooth®		Ver. 5.0 EDR/LE			
WLAN		IEEE802.11a/b/g/n/ac, IEEE802.11d, WPA2 support			
Wireless Communication	WWAN	-	Yes	-	Yes
	GPS	LTE, WCDMA Band 1/6/8 (3G Voice communication complied), GSM 900 / GSM 1800			
	GPS	GPS, GLONASS, Michibiki (QZSS/L1C)			
RFID/NFC		ISO14443Type A/B/FeliCa (R), ISO15693, Output Power over 3.5 A/m			
USB		USB 2.0 (Host/Client), USB Type-C (Power supply over 2,000 mA)			
Charging station port		USB 2.0			
SD card slot		microSD (SDXC)			
SIM card slot		-	nano SIM	-	nano SIM
Extention port (for Local Development)		(RFID/NFC, Legic Reader solutions)			
Battery	Main Power	Lithium-ion battery, Approx. 20 hours (JEITA G-mode)			
	Capacity	Changeable Lithium-ion battery with 3,000 mAh			
	Backup Time	RAM Backup: over 4 minutes RTC Backup: over 72 hours			
External Dimensions (W x D x H)		approx. 75 x 180 x 18 mm		approx. 78 x 180 x 18 mm	
Weight		approx. 300 g (including battery)		approx. 310 g (including battery)	
Durability	Dust / Water proof	IP67			
	Drop Durability	1.8 m onto concrete		1.5 m onto concrete	
	Temperature	Operation -20 to 50 °C / Non-operation -20 to 60 °C			
	Humidity	Operation 30 to 80 % RH / Non-operation 5 to 90 % RH			

Google, Android, Google Maps, Google Drive and other marks are trademarks of Google LLC. MIFARE is a registered trademark of the NXP B.V. FeliCa is a registered trademark of the Sony Corporation. The Bluetooth® trademark is owned by Bluetooth SIG, Inc., USA, and licensed to CASIO Computer Co., Ltd. Other product- and company names are either trademarks or registered trademarks of the respective owners. The design and specifications may vary without notice. The color display of pictures may vary from the actual colours. Screen images are simulated representations. The specifications in the table above were provided in April 2022.

CASIO grants a warranty period of 12 months on all CASIO System products (cash registers and handy terminals).



Nordelettronica S.R.L.
Via Cantù, 36 - 20092 - Cinisello Balsamo (MI) - Italia
+39 02 6111961 - www.nordele.it - info@nordele.it



CASIO

Mobile Industrial Solution